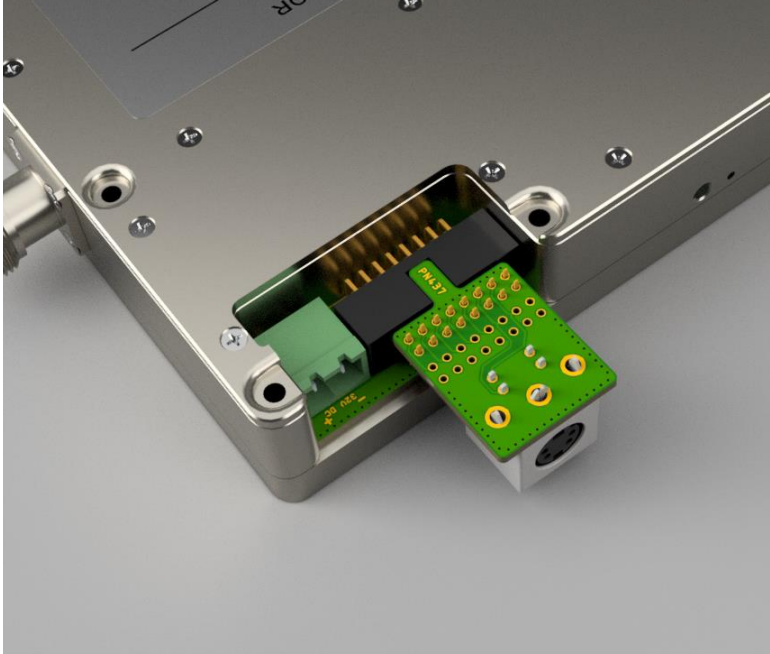


User Interface Adapter Board B



This User Interface Adapter Board is designed to connect our KU EDPU 5.0 easily to our KU SG 2.45-250 D and KU SG 2.45-25 B microwave power generator.

! Please notice support page to check software compatibility !

All connections are looped through to the free solder points, in order to be able to connect e.g. an analog power control further on.

Specification

Operating temperatur:	-20 °C ... 70 °C
Dimensions:	34 x 22 x 17 mm
Weight:	6 g
Supported devices:	KU SG 2.45-250 D KU SG 2.45-25 B